

# McHale

## 995 TSR

SQUARE AND  
ROUND BALE  
WRAPPER



[WWW.MCHALE.NET](http://WWW.MCHALE.NET)

The Professional Choice

# MCHALE 995 TSR SQUARE & ROUND BALE WRAPPER

The McHale 995 TSR is a trailed, single dispenser, fully automatic, radio remote controlled bale wrapper which is a practical and versatile solution for wrapping square & round bales.

With the usual McHale common sense design, quality components and precision engineering the 995 TSR bale wrapper is the trusted choice for farmers who want high output and consistent performance for use in static locations.





On the McHale 995 TSR bale wrapper, the four rotating rollers ensure an even rotation of the bale and the efficient application of the film. With a simple adjustment the 995 TSR will equally and efficiently wrap round bales.

The 995 TSR square and round bale wrapper provides an operator with the flexibility to mount a hydraulic power pack on the front of the machine for transportation and standalone operation.

The 995 TSR also features a trailed drawbar and transportation wheels. The machine can also be operated from the loader by radio remote control, allowing for one man operation of the loading, wrapping and stacking functions.

Like all McHale bale wrappers, the high output 995 TSR square and round bale wrapper will give you a tightly wrapped bale that contains all the natural juices for increased nutritional value while improving environmental protection.

# STANDARD FEATURES

## Machine Operation

The 995 TSR has a specifically adapted chassis which can be used for transportation and mounting of a hydraulic power pack.



## Film Break Sensors

Automatic film break sensors monitor the plastic as it leaves the dispenser rollers. If plastic breaks or runs out, the machine will notify the operator via the control console. The wrapper will stop, reverse back and wait for the film to be reattached.



## Cut and Hold

The McHale 995 TSR has a hydraulically operated cut and hold system, which cuts and holds the film in position ready to wrap the next square or round bale.

This time saving device eliminates the need to manually reattach the film after each bale is tipped off the bale wrapping table. Uniquely designed, this system works reliably and consistently as the 995TSR wraps bales in all weather conditions.

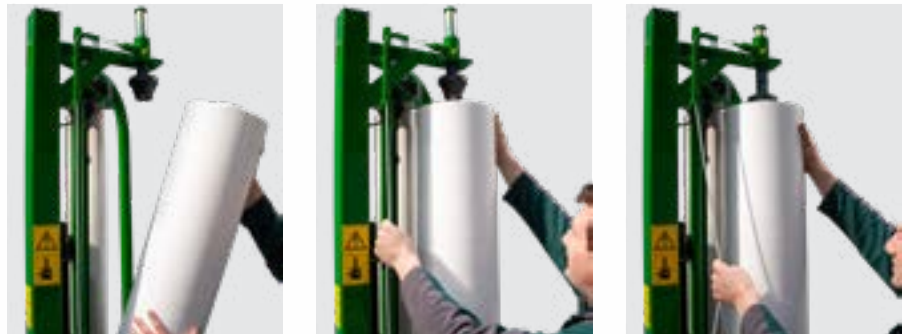


### Quick Fit Dispenser

The dispenser unit on the 995 TSR is noted for its ability to maintain a consistent stretch. It consists of two aluminum rollers geared to each other with robust steel gears of different ratio which maximises film usage.

### Quick Fit Plastic Loading

The dispenser lock and load system simplifies film loading. When removing the core of the used roll, the dispenser bobbin locks open in place. When a new roll is loaded it can be latched in place by simply pulling the cord.



### Patented Oscillating Rollers

On the 995 TSR the patented oscillating rollers cradle the bale between the four rollers as it is being wrapped. These driven oscillating rollers rotate the bale at a uniform pace ensuring that the bale receives the correct overlap, ensuring a tight seal and high quality finish.

## Radio Remote Control

The 995 TSR is fully automatic and can be controlled by a remote control from the loading tractor.

When the loading tractor places the bale on the wrapping table, the operator can start the wrapping process simply by pressing one button on the remote control.

The bale wrapper applies the preset number of layers to the bale of silage/haylage, stops and tips the bale automatically while the operator can stack the previously wrapped bale and bring the next bale to the wrapper for wrapping. With this automatic remote control 995TSR bale wrapper, one operator can load, wrap and stack the square or round bales, thus completing the entire job.

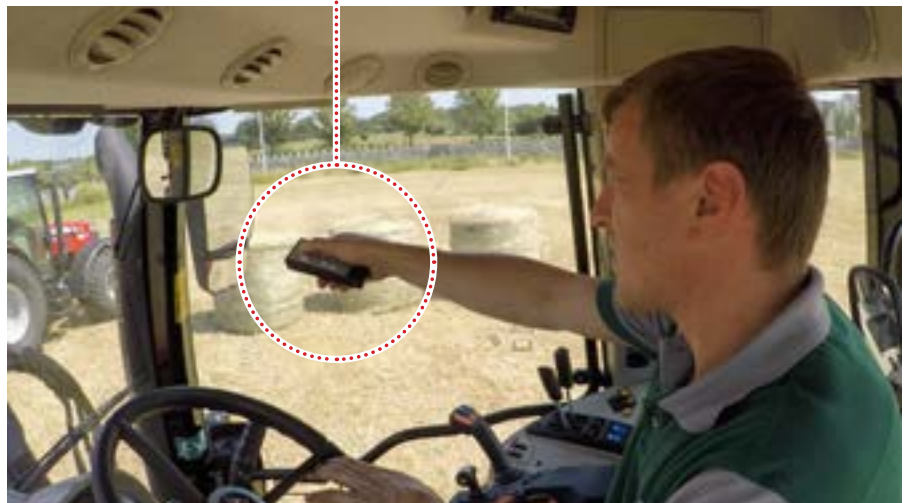


Expert Control Console and Radio Remote Control



## Expert Control Console

The Expert Control Console unit on the 995 TSR square bale wrapper enables the operator to change the bale size and select the desired number of film layers. When set, one touch of the auto start button operates the complete cycle from start to finish.



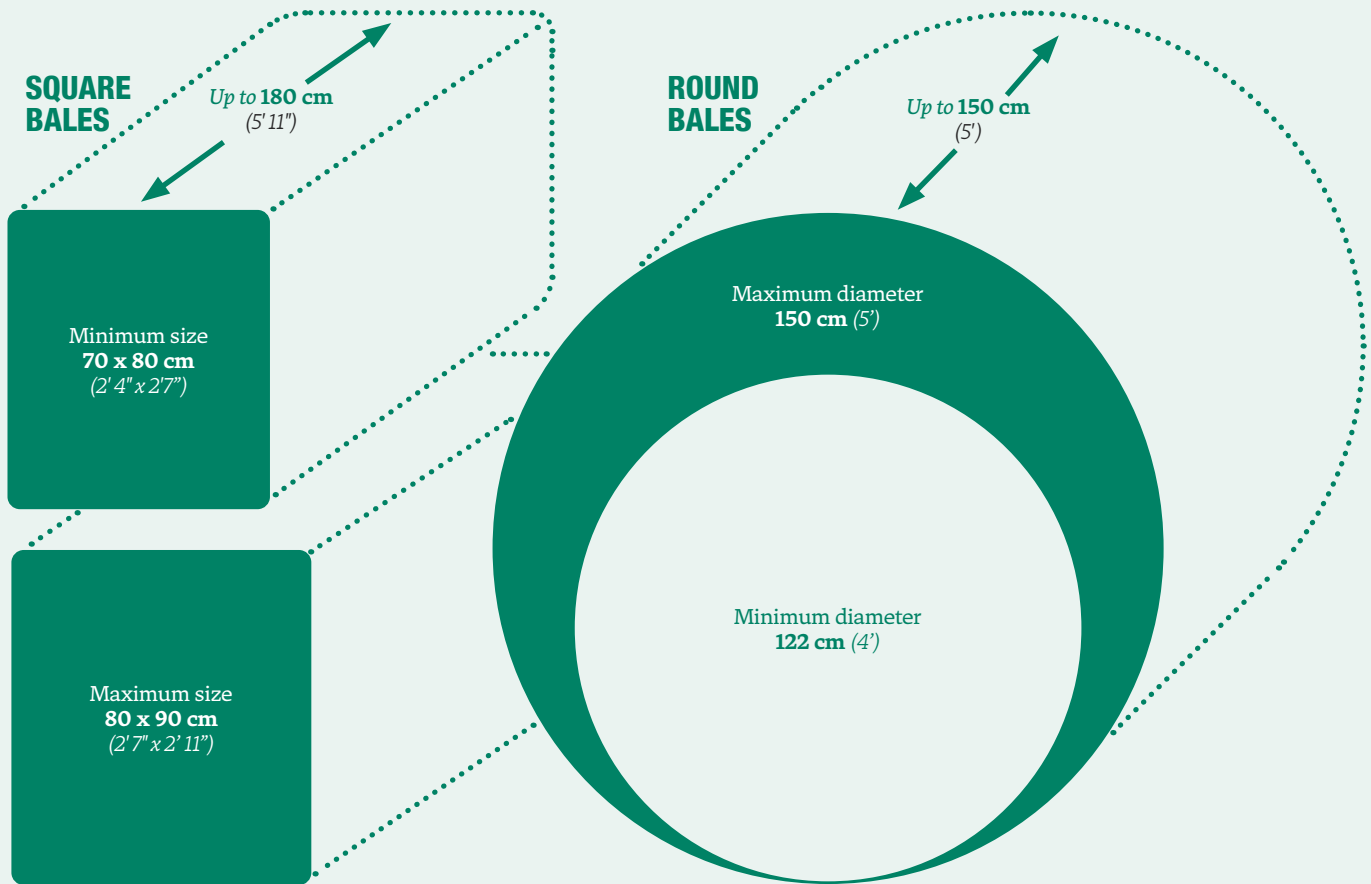
# BALE SIZES

**MAX BALE LENGTH**  
180 cm (5'11")

**SQUARE BALES**  
Minimum size  
70 x 80 cm  
(2' 4" x 2' 7")

**SQUARE BALES**  
Maximum size  
80 x 90 cm  
(2' 7" x 2' 11")

**ROUND BALES**  
Maximum Diameter  
150 cm  
(5')



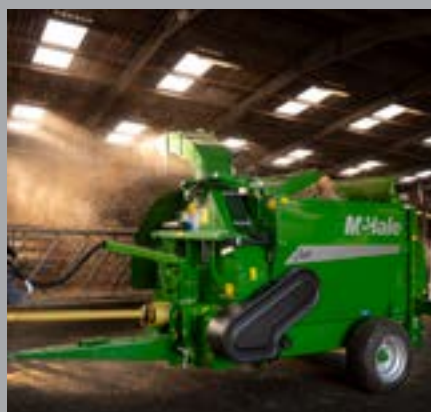
## TECHNICAL TABLE 995 TSR

### DIMENSIONS & WEIGHT

Transport Length	3.5 m (11' 6")
Transport Width	1.91 m (6' 3")
Height to top of rollers	0.97m (3' 2")
Total Height	2m (6' 7")
Min oil req. litres per minute	18L @ 160 bar
Max bale weight	1000kg. (2,205 lbs)
Weight (unladen)	1150 kg. (2,535 lbs)
Working speed-table (up to)	30 rotations/min
Protection Mechanism	Shear bolt
Greasing Points	15

### BALE SIZES

70x80, 80x80, 80x90cm & 45x80 x 2 bales (in pairs)	Length 180 cm (5' 11")
Round bales Max. Diameter	150 cm (5')
Round bales Max. Width	150 cm (5')



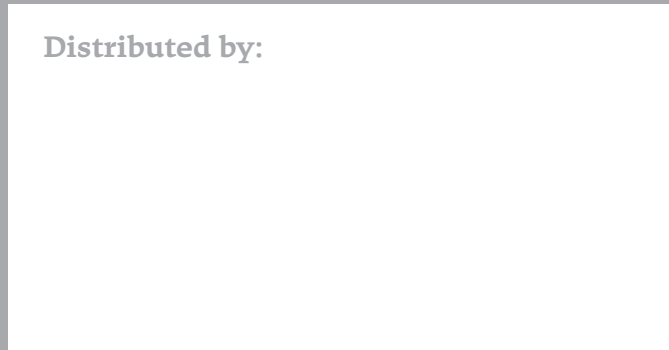
# M-Hale

Ballinrobe,  
Co. Mayo,  
Ireland  
F31 K138

T. 353 (0) 94 95 20300  
F. 353 (0) 94 95 20356  
E. sales@mchale.net

## WWW.MCHALE.NET

Distributed by:



**DISCLAIMER:** This literature is designed for worldwide circulation. Due to a continuing policy of product improvement, we reserve the right to alter specifications and constructions without notice. As machines are exported to many different countries, general information, pictures and descriptions are provided; these should be taken as approximate and may include optional equipment that is not part of the standard specification. Please consult your local dealer or distributor for further information.